

Welcome to the Community Inclusion Learning Session

Jefferson County Health Alliance

Bienvenido a la sesión de
aprendizaje sobre inclusión
comunitaria



VitalVillage

BELONG • LEARN • ENGAGE • TRANSFORM

N E T W O R K S



EXCEPTIONAL CARE. WITHOUT EXCEPTION.

NOW

Networks of Opportunity for Child Wellbeing

POWERED BY VITAL VILLAGE

**Jefferson County Health Alliance
Community Inclusion Learning Session
March 8, 2021**

Intended Outcomes / Los resultados esperados



Deepen understanding / Profundizar la comprensión



Enhance your capacity / Mejora tu capacidad



Excitement and safety / Emoción y seguridad

Workshop Outline

Opening Conversations

Reframe Community
Engagement

Unpack Scenarios

Introduction to 90-Day
Challenge

Closing Conversations

Conversaciones iniciales

Reencuadre el compromiso de
la comunidad

Desempaquetar escenarios

Introducción al desafío de 90
días

Conversaciones finales

Workshop Agreements

Acuerdos de taller



Be present,
when present



Trust the
process



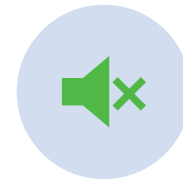
Speak from the
heart



Watch your
“airtime”



Say “I’m
complete”



Mute when not
speaking



Use video when
possible

Small Group Check-In

Pequeño Grupo Introducciones

- What brought you to the Alliance?
- What keeps you in this work?
- What does community engagement mean to you?



Small Group Tips/ Consejos

- Count or Letter Off
- Identify a timekeeper
- Share your name again
- If you finish before 3 min is up, say “I’m complete”
- Keep an eye out for broadcast messages





Reframing Community Engagement

Reframing Participación de la Comunidad



VitalVillage

BELONG • LEARN • ENGAGE • TRANSFORM

N E T W O R K S

A brick wall with three arched windows. The windows are covered with corrugated metal. The wall features a mural of a hand holding a paintbrush on the left side. The phrase "Together, We Create!" is painted in a stylized, gothic font across the middle of the wall. The text is white with a black outline and is set against a background of white paint that has been applied over the brick. The paint is dripping down the wall.

Together, We Create!



Context Matters



Communities

Families

Children



Adverse childhood experiences cost
US \$548 billion annually or
\$4,248 annually per family

The Problems

COVID-19

Related inequities in communities across the nation are leading to higher rates of **food, housing, and economic insecurity** as well as inequitable educational opportunities for children. This is because of **structural inequities**.

*What would it look like for every child,
irrespective of background and circumstances,
to have an opportunity
to thrive in a healthy community?*



Developing Leaders



Connecting Institutions





**Developing
Leaders**

**Connecting
Institutions**

**Developing
Leaders**



**Connecting
Institutions**



BELONG



**Developing
Leaders**



**Connecting
Institutions**



LEARN



**Developing
Leaders**



**Connecting
Institutions**



ENGAGE



**Developing
Leaders**



**Connecting
Institutions**



TRANSFORM



**Developing
Leaders**



**Connecting
Institutions**



Vital Village Networks Approach



Use a collaborative approach to shape opportunities and co-create solutions.



Engage caregivers as key designers of strategies to best leverage community assets.



Cross-sector engagement is needed to support protective factors.



We convene networks and provide a means of enabling cross-sector work.

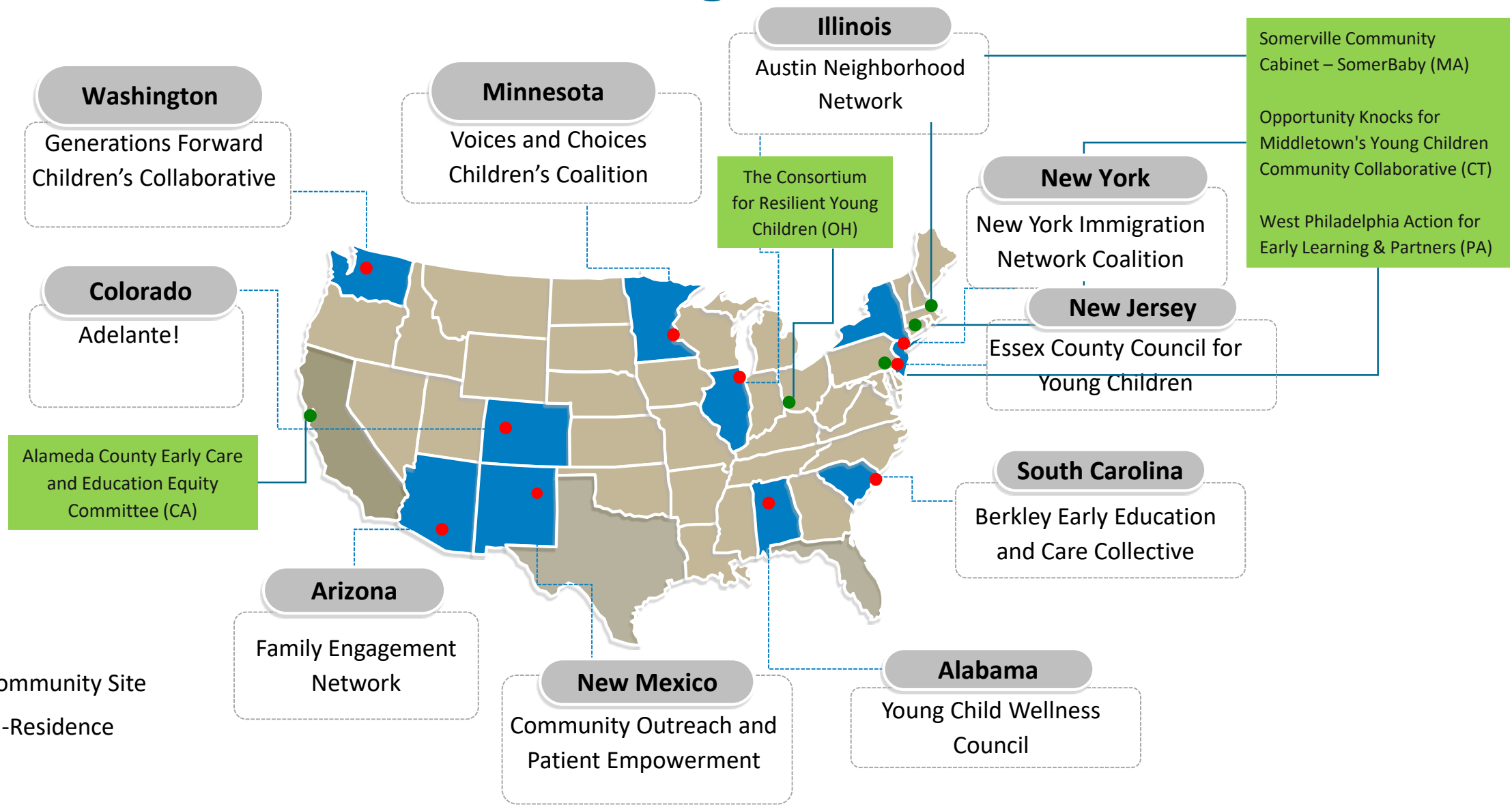


Develop dashboards and tools to share ownership of benchmarks for child wellbeing.



Use data as a catalyst for community engagement and accountability.

Vital Village NOW



KEY

- Learning Community Site
- Mentors-in-Residence

Partner Highlights: Vital Village NOW

Linking Immigrant Families to Early Childhood Education (NY)

- Mixed methods data tool
- Increase access to PreK for 10,000 immigrant families

Family Engagement Network (AZ)

- Two-Generation Strategy
- Align quality child care and workforce development
- Parent engagement to transform model

Young Child Wellness Council (AL)

- Partnership with Housing Authority for Crescent East Community
- Child care deserts
- Transform engagement approach with community leadership



Building Community Capacity



When addressing social determinants of health we often forget the most important and most abundant resource...

“We are a community of possibilities, not a community of problems. Community exists for the sake of belonging and takes its identity from the gifts, generosity, and accountability of its citizens. It is not defined by its fears, its isolation, or its penchant for retribution. We currently have all the capacity, expertise, programs, leaders, regulations, and wealth required to end unnecessary suffering and create an alternative future.”

Peter Block - Community: The Structure of Belonging



Principles of Community Engagement



Co-Design: Design with and not for

A participatory approach where community stakeholders cooperatively develop social innovations

- Acknowledges the historical processes and structural inequalities
- Recognizes differential power, access to resources, and participation

Community wisdom and experience is valued

Capacity building centers on equitable leadership in design, participation, and decision making

Mindset, infrastructure, and capacity aligned for equitable governance

Ripple Effects

Conditions built upon and support social justice

- co-design
- frameworks, approaches, tools

Impact on Participants

- Engagement of diverse community members
- work on structural inequities

Impact on Coalitions

- community partnership valued
- center the margins
- adoption of equity tools

Community Impact

- Integration of social justice in early childhood systems work
- Increased work to address structural racism

Ripple Effects: State Resources & Policies

Voices and Choices for Children Coalition (MN)

Wrote and passed
a bill to elevate
local leadership

Advocated for
equity language
in legislation

Community
governance

Communities
identify and
fund solutions

Berkley Early Care and Education Collaborative (SC)

Highlighted
inequities in early
intervention

Engaged
policy
stakeholders

Strategic
partnerships

State legislator adopts
trauma-informed equity
child dev perspective

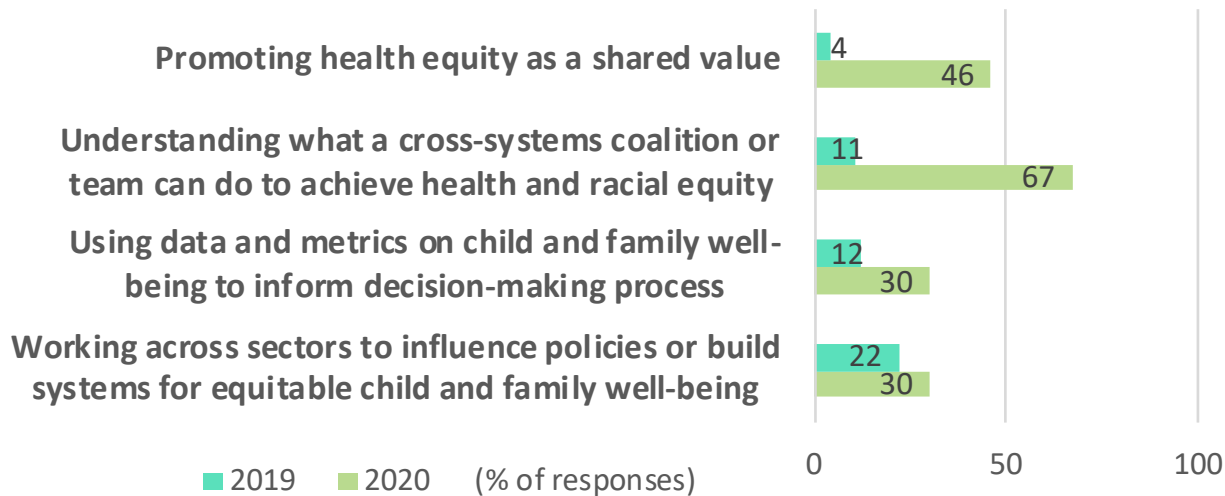


Voices and Choices for Children Coalition members with Lt. Governor Peggy Flanagan (second from left, front row)

What did we learn?

Participants and coalitions gained skills, knowledge, and awareness to refocus early childhood systems on equity, social justice, and to work against racism.

Change over time: “doing very well at...”



Increased intensity of community engagement: 6 of 10 coalitions engage community members in co-leadership roles in 2020 compared to 1 in 2019

Continuum of community engagement (N=10)



“Learned how to fully center our community and how to challenge the established norms on how equity in early care and education should look.”

“We have been challenged (in a good way) to examine our own organizations and our part in maintaining institutional racism.”

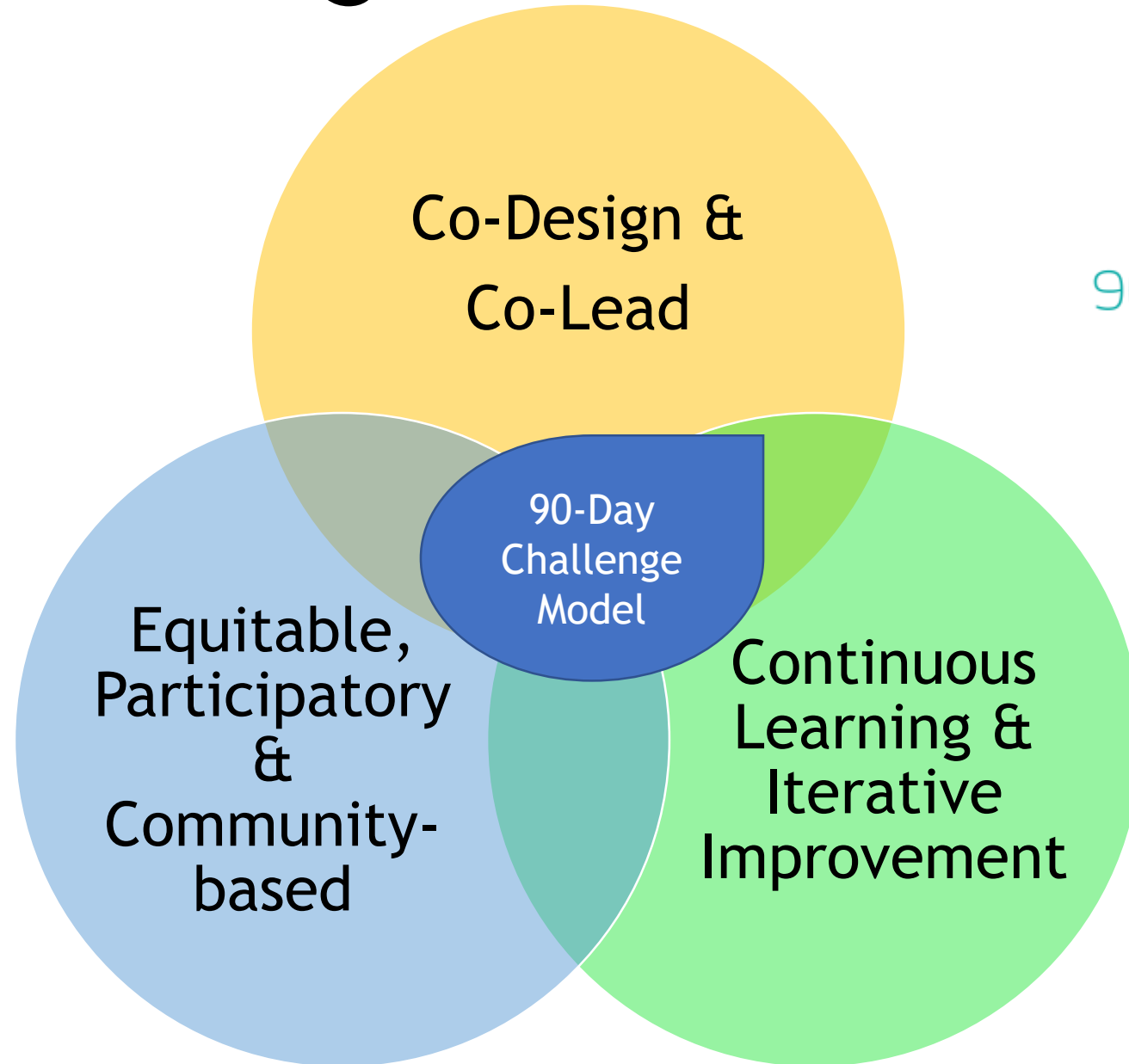
“We were able to work through our plans to ensure that we are looking at solutions from an equity lens.”

“Learning from the peers in the network has provided technical support and encouragement for our work.”



Vital Village Local Commitment in Boston

90-Day Challenge Model



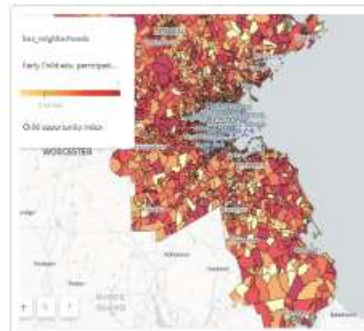
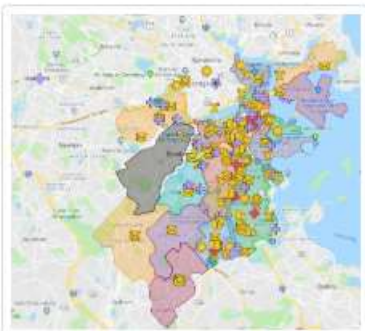
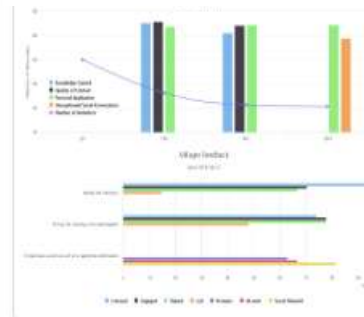
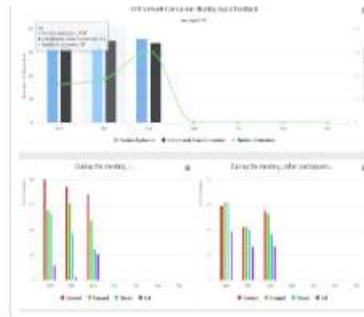
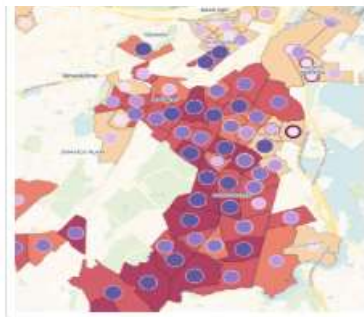
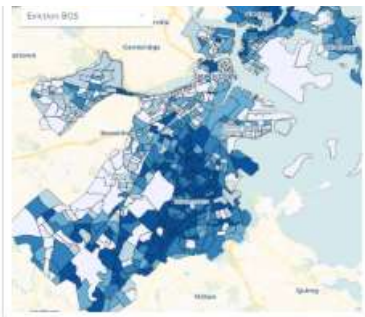
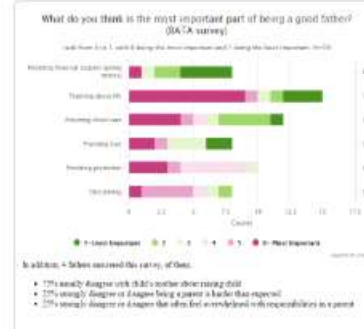
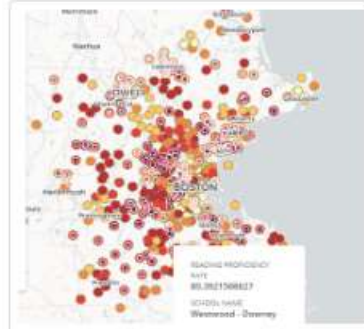
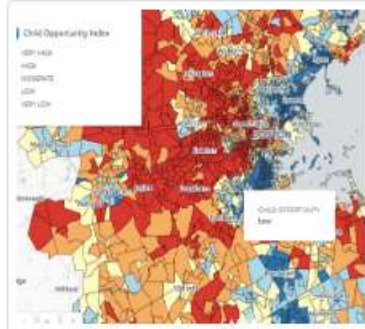
90 Day Challenge



VitalVillage
BELONG • LEARN • ENGAGE • TRANSFORM
at BOSTON MEDICAL CENTER

VILLAGE VITAL SIGNS

Our publicly shared community data dashboard



VitalVillage

BELONG • LEARN • ENGAGE • TRANSFORM

BOSTON MEDICAL CENTER



Cradle Lab
R E S E A R C H
POWERED BY VITAL VILLAGE

The Vital Village Research Lab, **CRADLE** concentrates on research & evaluation of community-based interventions and models that promote optimal child development & school readiness

What is National Capacity Building?

Exploring

Exploring mindsets

Sharing

Sharing tools and resources for implementation

Applying

Applying tools for collaborative planning

Coaching

Coaching and Technical Assistance

Action Lab and 90-Day Challenge Process





COVID-19 Spotlights the “Vital” in VVN





Rx for a Village



**Healthy Communities + Flourishing Families =
Thriving Children**



“We are socialized to see what is wrong, missing, off, to tear down the ideas of others and uplift our own. To a certain degree, our entire future may depend on learning to listen, listen without assumptions or defenses.”

– **Adrienne Maree Brown**, Emergent Strategy: Shaping Change, Changing Worlds



Thank you



NOW Networks of Opportunity for Child Wellbeing

POWERED BY VITAL VILLAGE

Acknowledgements

Cross-Team

Renee Boynton-Jarrett, MD, ScD
Soojin Conover, PhD
Ryham Seleh

NOW

Diana Rivera, MPH, MSW
Tiffany Rodriguez, MPH
Camilia Beiner

Vital Village Boston

Alex Jones
Yusuf Ali
Desiree Hartman

CRADLE LAB

Clare Viglione, MPH, RDN
Hassan Lubega
Marisol De Ornelas, MSPH
Sarah Rojas-Rogalewicz, MS

AmeriCorps VISTA Service Members

Camelia Garrick, MS-HRM
Jenna Novy
Ishaan Shah
Troy Biermann



Self Reflection / Autorreflexión

Group Reflection

- **CHAT BOMB:** What struck you or stood out to you?
- What parts reminded you of your own work?
- What are you most doubtful about or challenged by?
- What new ideas/insights are beginning to emerge for you?
- What's something you might be interested in applying to your work?

Group Reflection / Reflexión Grupal

- *CHAT BOMB*: What struck you or stood out to you?
- CHAT BOMB: ¿Qué te llamó la atención o te llamó la atención?

Group Reflection / Reflexión Grupal

- What parts reminded you of your own work?
- ¿Qué partes te recordaron tu propio trabajo?

Group Reflection / Reflexión Grupal

- What are you most doubtful about or challenged by?
- ¿Qué es lo que más duda o le desafía?

Group Reflection / Reflexión Grupal

- What new ideas/insights are beginning to emerge for you?
- ¿Qué nuevas ideas / conocimientos están empezando a surgir para ti?

Group Reflection / Reflexión Grupal

- What's something you might be interested in applying to your work?
- ¿Qué es algo que podría interesarle aplicar a su trabajo?

A serene sunset scene over a large body of water. The sky is filled with dark, layered clouds, with a warm orange and yellow glow from the setting sun breaking through near the horizon. The sun's light reflects on the water's surface. In the foreground, a dark silhouette of a pier or dock extends into the water from the bottom left. The overall mood is calm and peaceful.

Break/Pausa

10 min



**Unpacking
Community
Engagement
Scenarios**

**Desembalaje
de escenarios**

Small Group Instructions/ Instrucciones

12 minutes

Re-Introduce Yourself
(Name)

Read the Scenario

How was the dignity of the
community member(s) not
upheld or respected?

What could the “presenter”
have done differently?

Large Group Discussion

Discusión en Grupo

What was an “ah-ha” moment for you?

What questions were raised?

How are you thinking about your work differently?



90-Day Challenge Introduction

**Introducción al
Desafío de 90
Días**

90 Day Challenge



1. Accountability/ Responsabilidad
2. Transparency / Transparencia
3. Collective identity / Identidad colectiva
4. Manageable time frame for setting goals / Marco de tiempo manejable para establecer metas

90 Day Improvement Cycle / Ciclo de mejora de 90 días

LEARN/Aprender
30 Days/dias

TEST/Prueba
30 Days/dias

REVIEW/Revisar
30 Days/dias



The journey of 1,000
miles begins with a
single step.

- Lao Tzu

El viaje de 1.000 millas
comienza con un solo
paso.

- Lao Tzu₁





How do you determine where to begin?
¿Cómo se determina por dónde empezar?



1. Set the table for success / Ponga la mesa para el éxito

Always **START** with your **GOAL** in mind

- *Write down/review your overarching vision*

Name a **BRIGHT SPOT**

- *A solution, an inspiration, something that is working*
- *Something exceptional!*

2. (Re)Framing Priorities / Reformular las prioridades

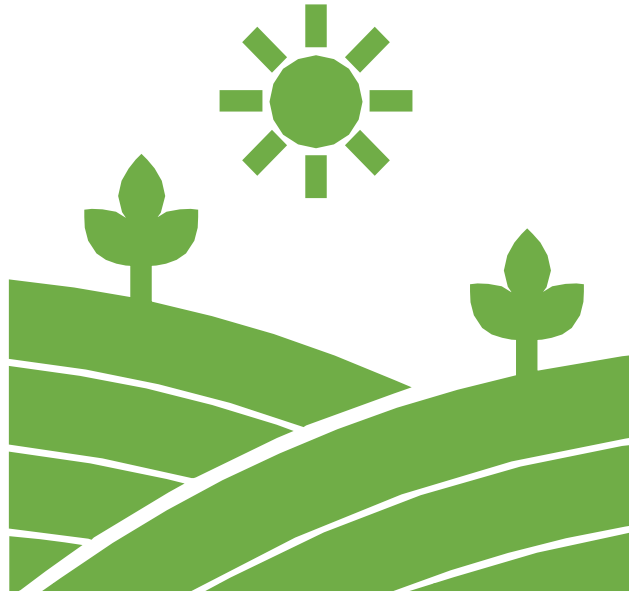
Strategic Priorities

- *Write down/review your strategic priorities*

Deeper dive in considering the priorities

- *Explore the relationship between the priorities in terms of timing, readiness, urgency, and needs*

3. Understand the Landscape/ Entender el paisaje



Analysis of:

- Name: Resources, Priorities, and Requirements
- Use the Dignity Frame
- Use the Iceberg Systems Thinking

A decorative graphic on the left side of the slide. It features a large orange L-shaped frame. Inside this frame, there is a green square frame. Within the green square, there is a smaller green horizontal rectangle. The overall design is minimalist and uses bold colors.

4. Outline your STEPS/ Describe tus PASOS

- What needs to happen and in what order?
- Just draft at this stage we will come back to it

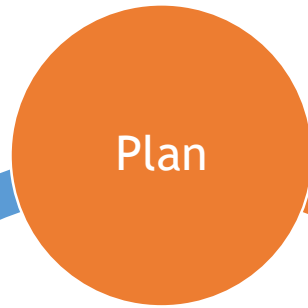


5. Aim HIGH!/ Apunta alta!

What are we trying to accomplish?

- By When?
- SMART GOALS

What are we going to do and why?



Do it!

Try again!



Try again!

What changes can we make?



*How did it go? Did we achieve what we intended?
Were there outcomes we didn't expect?*

Adapted by VVCP and First Teacher



**Action Team
Planning**

**Planificación del
equipo de acción**



Vital Village Networks at Boston Medical Center
801 Albany Street, 2-N, Boston, MA 02119
617.414.3674
www.vitalvillage.org