

Community Strategy Series

July 2018



Welcome and Introductions

Series Purpose



Framework for Shared Measures of Success

Clarify the desired future for children, families, community

Identify data measures

Capture the story behind the data

Finalize a living data dashboard

Learning and Data Sharing Plan

Build capacity to use Civic Network as collaborative work and data sharing space

Identify routines and structures to monitor data dashboard over time

Infrastructure for Success

Refresh EU's guiding principles

Update EU charter

Confirm governance model

Today's Purpose



- Refresh ourselves on the purpose and outcomes of this series of community strategy sessions
- Understand Civic Network as a resource for East5ide Unified | Unido and the data dashboard repository
- Review the draft elements for the data dashboard
- Begin to identify the routines and supports needed to use East5ide Unified | Unido's data dashboard over time



A web based tool designed to
support collaborative efforts

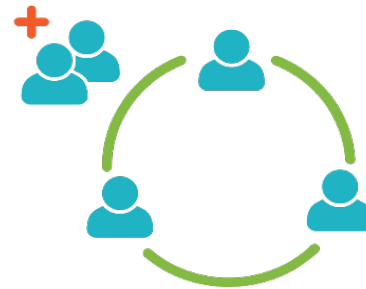
Allows users to:

- Share documents, tools, and best practices
- Create shared working space for networks and collaboratives
- Map available resources to understand who is doing what and where
- Create online profiles

CIVIC NETWORK



Search for networks that match your interests



Invite individuals and organizations to join your network



Easily organize network materials in one location



<http://www.civicnetwork.io/network/east5ide-unified>

CIVIC NETWORK



Search for networks that match your interests



Invite individuals and organizations to join your network



Easily organize network materials in one location

WHAT: A free, web-based tool designed to support collaborative efforts.

WHO: Networks, collaborators, organizations, and individuals who strive to improve their communities through collaboration.

Civic Network allows East5ide Unified to:

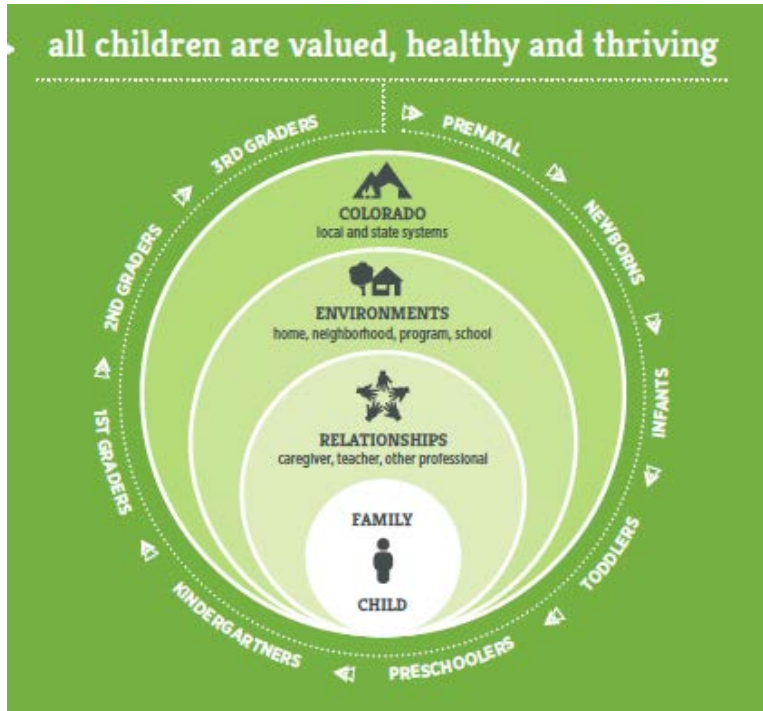
- **Create shared working space for the initiative** – make all resources equally available and membership easy to see
- **Share documents, tools, and best practices** – find resources on each network page, or upload your own document or event
- **Track progress toward actions and outcomes for East Denver** -adding outcomes, goals = data dashboard
- **Find new partners and networks by learning who is doing what and where in Denver to build alignment** – search by keyword, topic area, or county and ask to join networks or contact people to make connections

JOIN EASTSIDE UNIFIED:

<http://civicnetwork.io/network/east5ide-unified>

CONTACT: Support@civicnetwork.io

Grounding Resources



VISION

a strong East Denver community where all children and families are valued, healthy, and thriving

MISSION

To build a thriving network of support systems and a community-wide commitment to leveling the playing field for young children so they can succeed in school and in life.

CORE VALUES

CHILD FOCUSED & FAMILY CENTERED

we seek to create equity of opportunity for all children, honoring and embracing the experiences and diversity of families

APPRECIATIVE OF CULTURAL HERITAGE

we preserve, value, and acknowledge the rich history and culture of the neighborhoods and the people who live within them

COMMUNITY DRIVEN

we are led by authentic community voice, building on the assets and gifts that exist within the five neighborhoods

CULTURALLY RESPONSIVE

we respect, honor, and incorporate diversity and are responsive to culture, language, and abilities

INCLUSIVE

we value ALL children, youth and adults who live, work, learn and play in this community

GOALS

Children are healthy, engaged, learning, and exploring

Places, spaces, and environment that impact children are safe, supported, and connected

Caregivers, adults, and families are engaged, interactive, and responsive

The East Denver community prioritizes children and families

STRATEGIES

RESILIENCE

Build resilience in all who are part of the community.

RELATIONSHIPS

Enhance connections that build relationships, trust and a sense of belonging

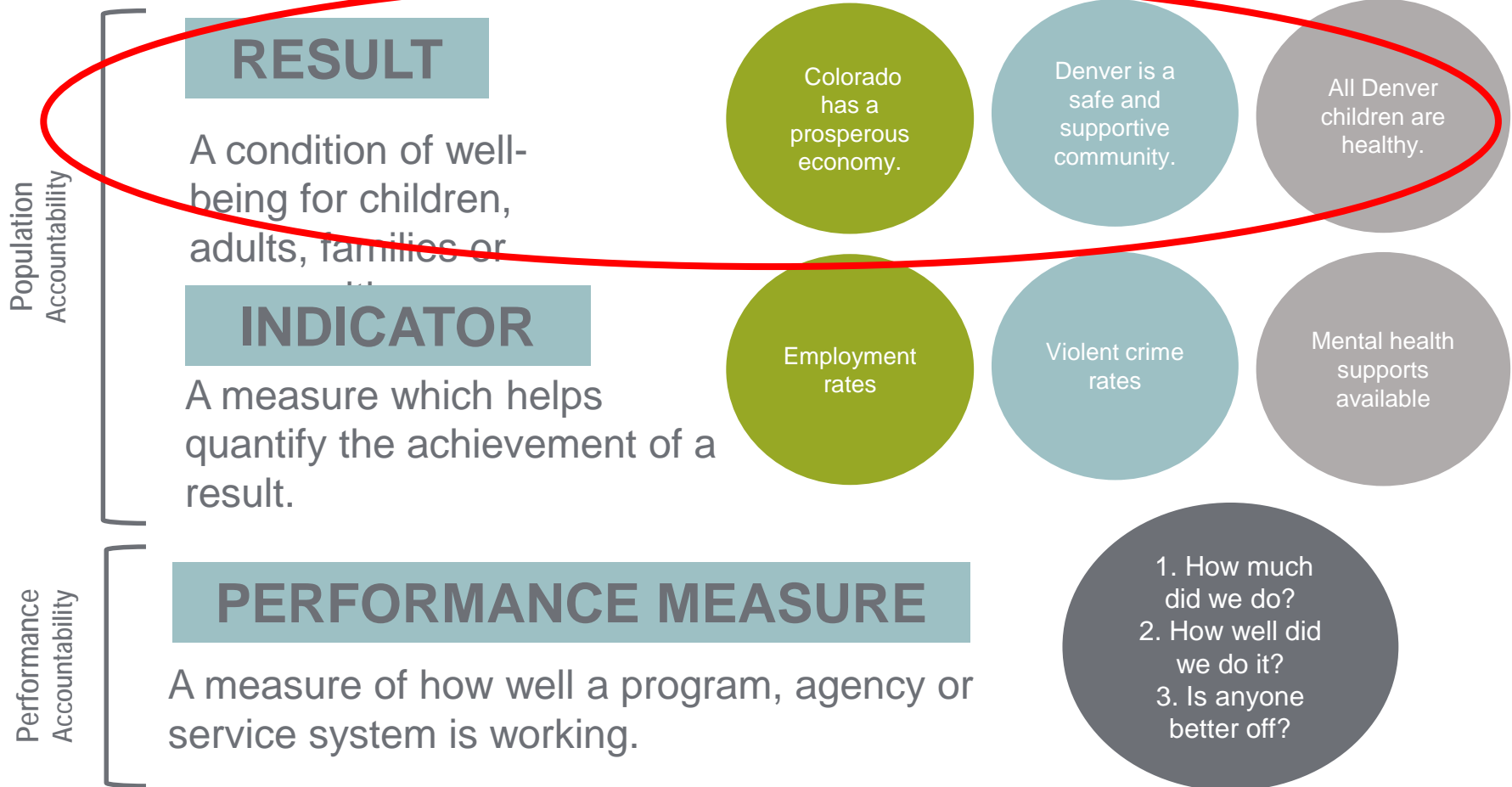
OWNERSHIP

Promote engagement and ownership at individual, program and community levels

HOLISTIC, MULTI-DIMENSIONAL APPROACHES

Support holistic multi-dimensional approaches to comprehensive health and learning in homes, schools, and community

Key Definitions



Results: condition of wellbeing

VISION MISSION

VISION
a strong East Denver community where all children and families are valued, healthy, and thriving

MISSION
To build a thriving network of support systems and a community-wide commitment to leveling the playing field for young children so they can succeed in school and in life.

CORE VALUES GOALS

CHILD FOCUSED & FAMILY CENTERED

we seek to create equity of opportunity for all children, honoring and embracing the experiences and diversity of families

APPRECIATIVE OF CULTURAL HERITAGE

we preserve, value, and acknowledge the rich history and culture of the neighborhoods and the people who live within them

Children are healthy, engaged, learning, and exploring

Places, spaces, and environments that impact children are safe, supported, and connected

Caregivers, adults, and families are engaged, interactive, and responsive

The East Denver community prioritizes children and families

COMMUNITY DRIVEN

we are led by authentic community voice, building on the assets and gifts that exist within the five neighborhoods

CULTURALLY RESPONSIVE

we respect, honor, and incorporate diversity and are responsive to culture, language, and abilities

INCLUSIVE

we value ALL children, youth and adults who live, work, learn and play in this community

RESILIENCE

Build resilience in all who are part of the community.

RELATIONSHIPS

Enhance connections that build relationships, trust and a sense of belonging

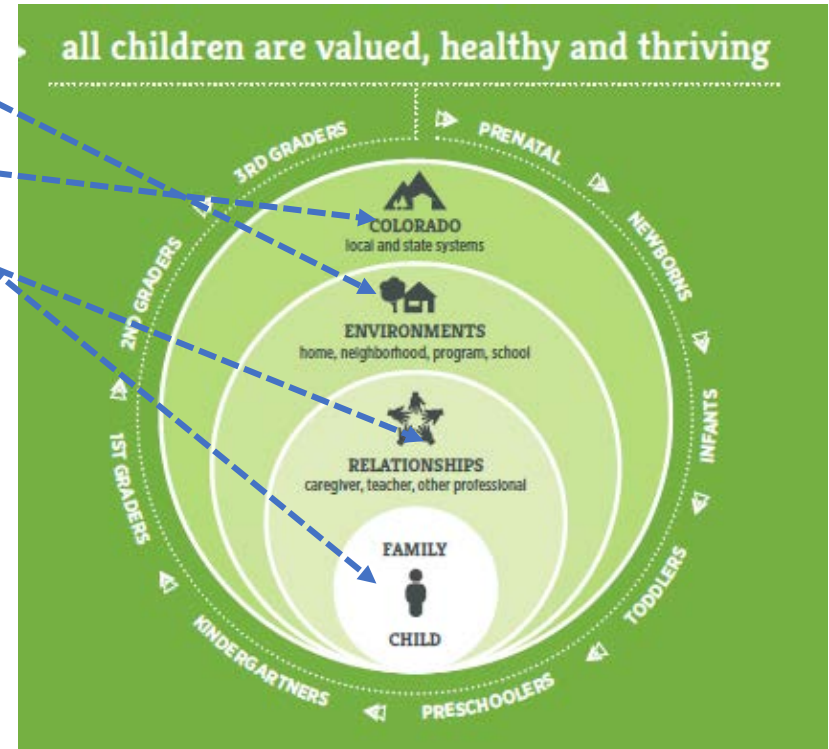
OWNERSHIP

Promote engagement and ownership at individual, program and community levels

STRATEGIES

HOLISTIC, MULTI-DIMENSIONAL APPROACH

Support holistic multi-dimensional approaches to comprehensive health and learning in homes, schools, and community



Recommendations for Result Statements



From

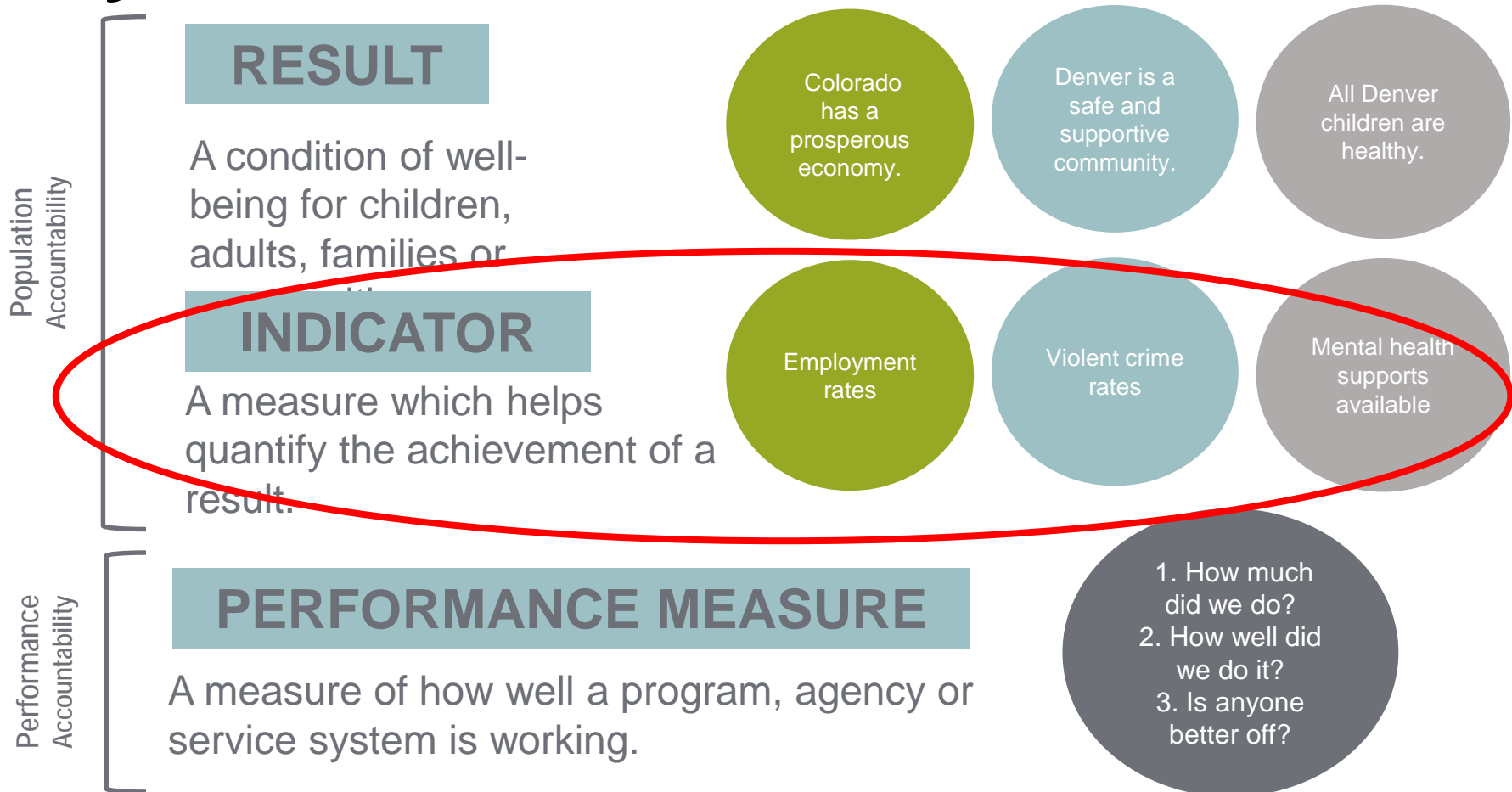
- The East Denver community prioritizes children and families
- Places, spaces and environments that impact children are safe, supportive and connected
- Caregivers, adults and families are engaged, interactive and responsive
- Children are healthy, engaged, learning and exploring

To

- The East Denver* community prioritizes children and families
- People and places that impact children are safe, supportive and connected
- No changes
- Children are healthy, (engaged), learning and (exploring)

* “East Denver” is meant to include those who live, work, play, pray and otherwise are connected in and to East Denver (i.e. stop using 80205)

Key Definitions



Headline Indicators: help quantify results



Considerations as reviewed potential indicators:

- Does it help describe or define what the result means, includes?
- Does it come from a strengths or asset based approach?
- Is it better suited to help build the context or capture the story behind the data?


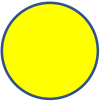
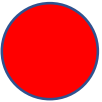
Note: We will want and need to disaggregate data by race, ethnicity, socioeconomics, length of time in East Denver, connection to East Denver, etc (big task!)

Indicator Sets: help quantify result



Review each set of indicators per result

Activity:

-  green dot = totally support this indicator, keep it!
-  yellow dot = this is close, yet some hesitation
-  red dot = not the right fit for EU's meaning of this result, no go

Indicator Sets



Review Input:

Yellow dots – what would it take to move this to green?

Red dots – what is off, doesn't work with this indicator?

Generally – are we on the right track?

Generate Ideas on Routines



- What would help me understand, keep these results and indicators in the forefront?
- What would help u to use these to guide decisions and actions, monitor the wellbeing of East Denver over time, etc?
- What ideas do you have to help visualize and put context around the results and indicators?
- How do you see them being used by the Council? the project team? The community?

Series Purpose – August Focus



Framework for Shared Measures of Success

Clarify the desired future for children, families, community

Identify data measures

Capture the story behind the data

Finalize a living data dashboard

Learning and Data Sharing Plan

Build capacity to use Civic Network as collaborative work and data sharing space

Identify routines and structures to monitor data dashboard over time

Infrastructure for Success

Refresh EU's guiding principles

Update EU charter

Confirm governance model

Preview Next Steps



- Between now and August 22nd meeting
 - Compile input, identify data sources, pull baseline data, draft story
- Live doodle for routine Council meetings
 - 2nd, 3rd, or 4th Tuesday of month, 5:30-7:30pm
 - 2nd, 3rd, or 4th Wednesday of month, 5:30 – 7:30pm
- Exit Ticket
- EU manager/supporter position
- Civic Network



E A S T 5 I D E
UNIFIED | UNIDO

<http://east5ideunified.org/>
earlychildhood@civiccanopy.org
east5ideunified@gmail.com