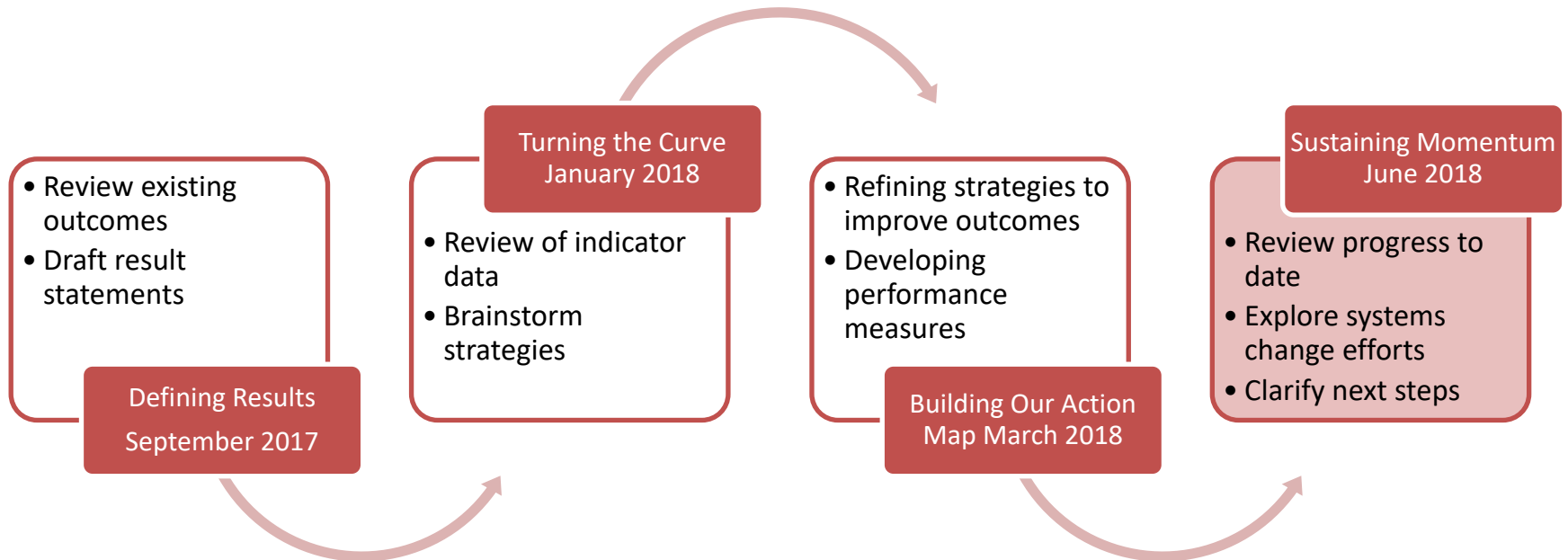


SWFI Childcare Learning Community Meeting

June 11, 2018



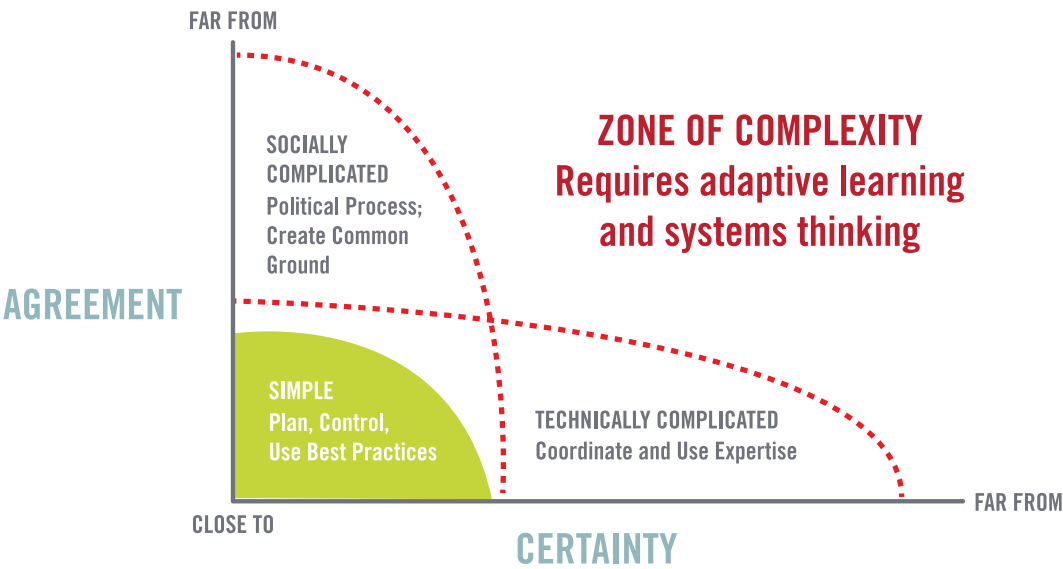
LEARNING COMMUNITY PROCESS



MEETING OUTCOMES

- Review progress to date on overall project objectives
- Understand the connection between each action team and larger systems change
- Plan next steps for action teams and the overall Learning Community

REVIEW OF PROCESS TO DATE

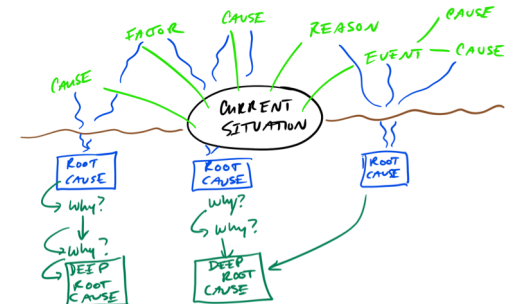
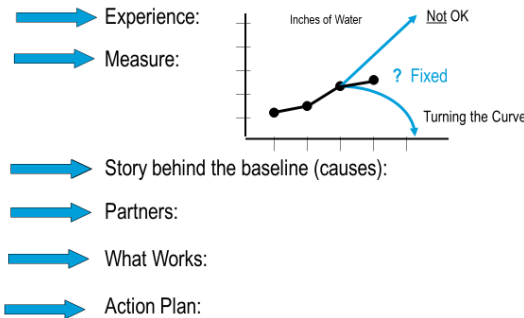


Population Accountability:

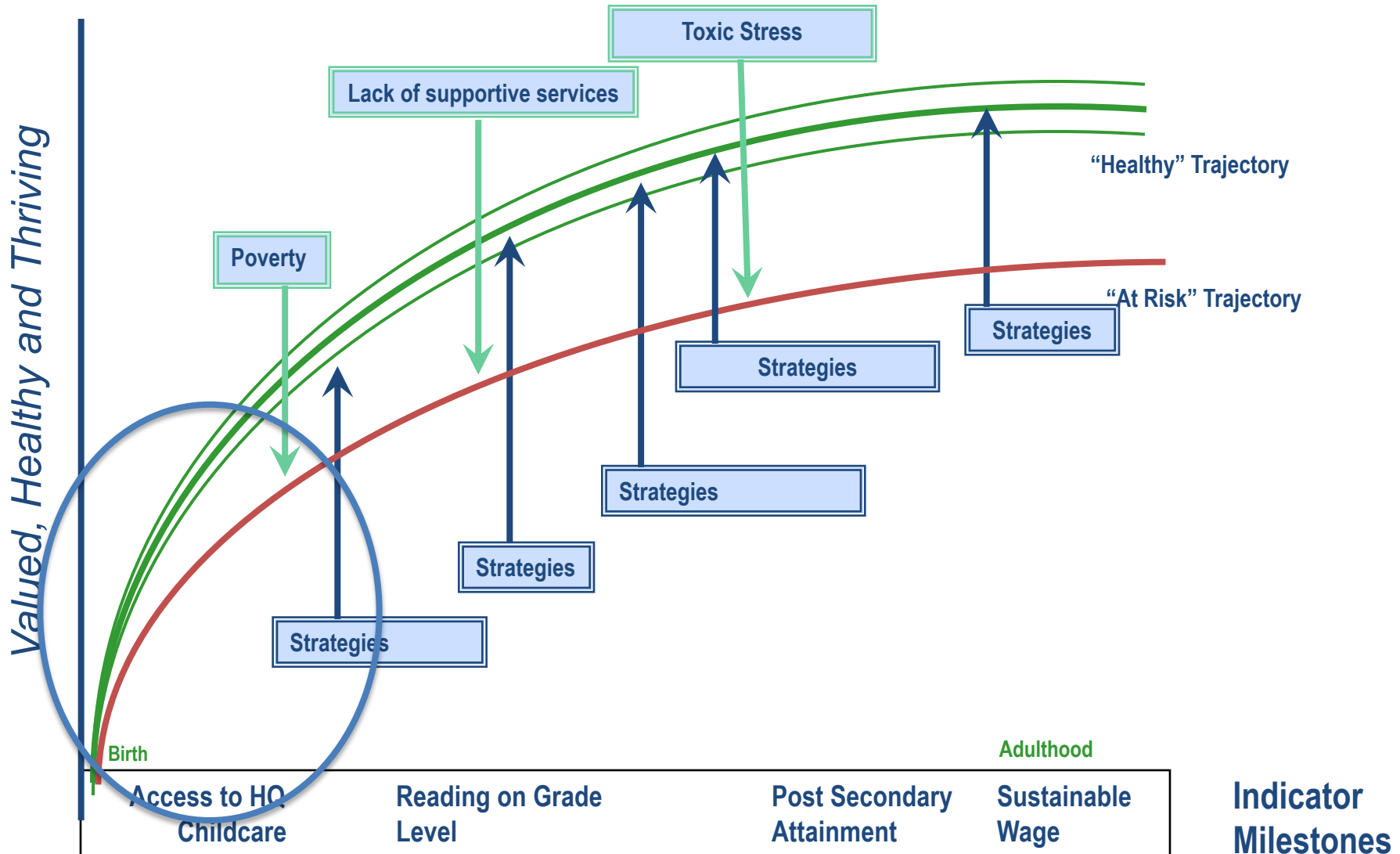
Results → Indicators

Program Accountability:

Strategy → Performance Measures



Result: Colorado families are valued, healthy, and thriving across generations.



RESULT Colorado families are valued, healthy, and thriving across generations.

INDICATORS

Post-secondary
credential
attainment

% of children in
high quality child
care settings

% of families
earning a
sustainable wage

4th grade reading
achievement
levels

STRATEGIES

Increase the
affordability and
financial viability
of child care

Create policy
solutions that
expand access to
quality child care

Expand availability
of quality child
care

Increase
awareness of
quality child care
options

Other?

**PERFORMANCE
MEASURES**

↓

↓

↓

↓

↓

GUIDING PRINCIPLES

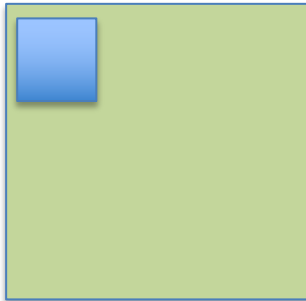
- Solutions are sustainable
- **Solutions are scalable**
- **Solutions improve systems**
- Solutions address root causes and barriers
- Solutions respond to students' lived experiences and goals
- Solutions considers a variety of care models to honor student choice
- Solutions promotes partnership and collaboration

SYSTEMS CHANGE

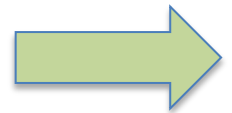
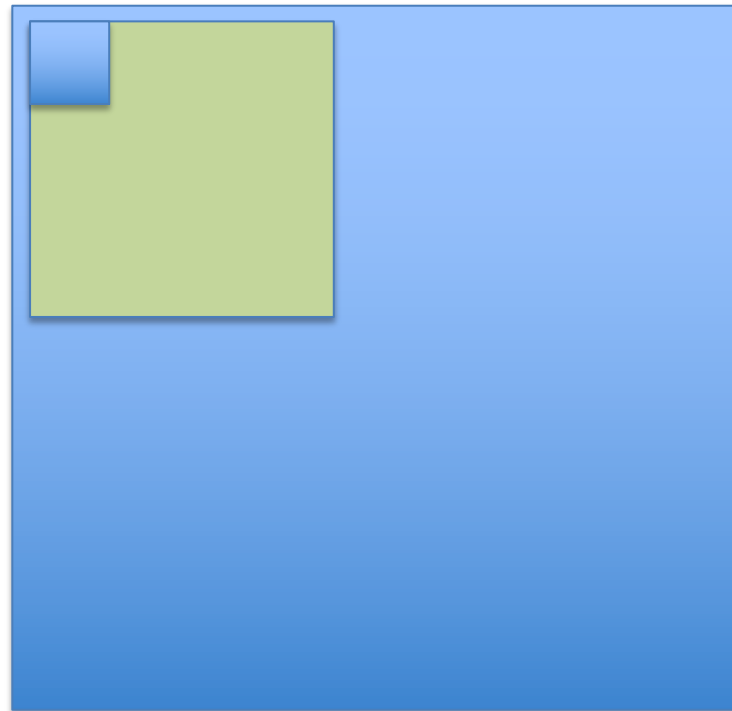
Goal: 100% of SWFI students have access to high quality childcare



Goal: 100% of CCA/CCD students have access to high quality childcare



Goal: 100% of Douglas, Arapahoe, and Adams County families have access to high quality childcare



MAPPING THE SYSTEM

Expanding
Availability of
Quality Care



Formal Care

Increasing
Awareness of
Quality Care



Informal Care



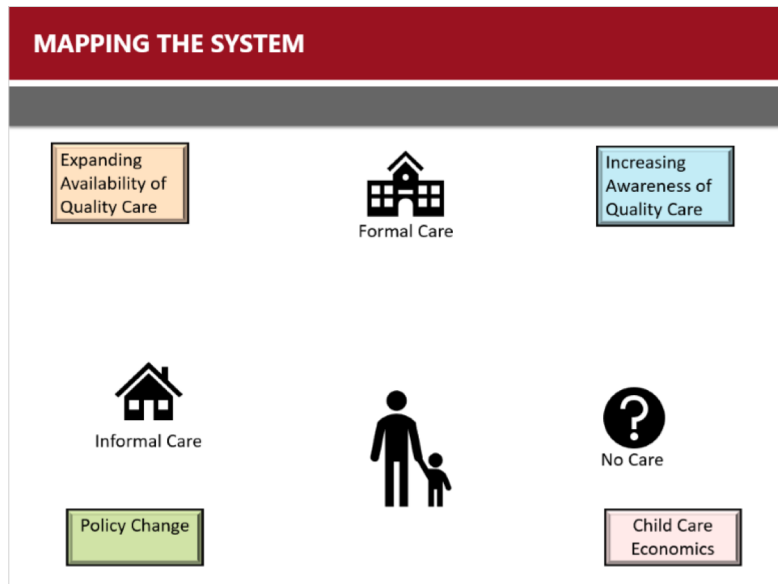
No Care

Policy Change

Child Care
Economics

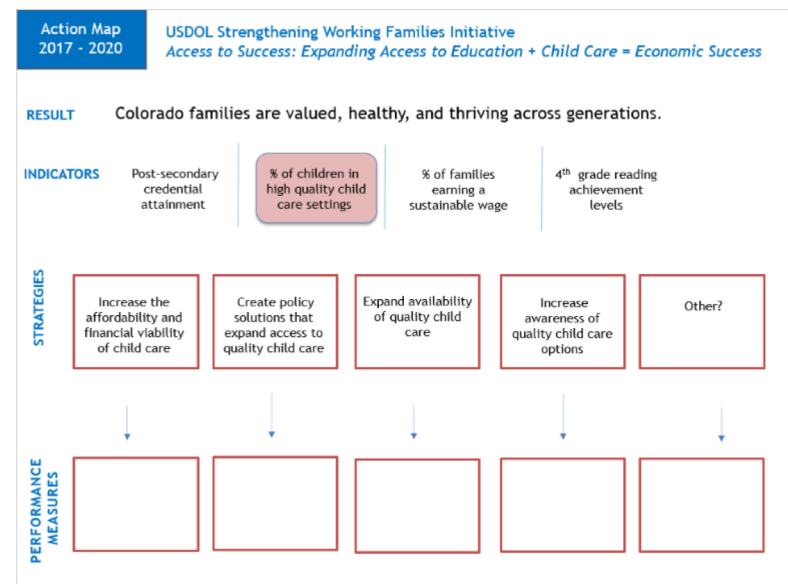
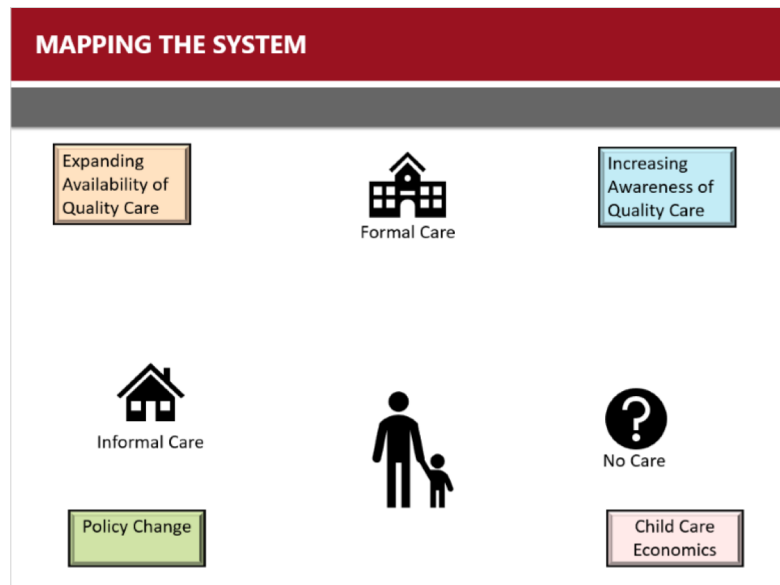
ACTION TEAM SHARE OUT

- What is the purpose of the team? What is the specific near-term focus?
- What has the team learned so far? What insights have you gained?
- What questions do you have? What do you need help with?

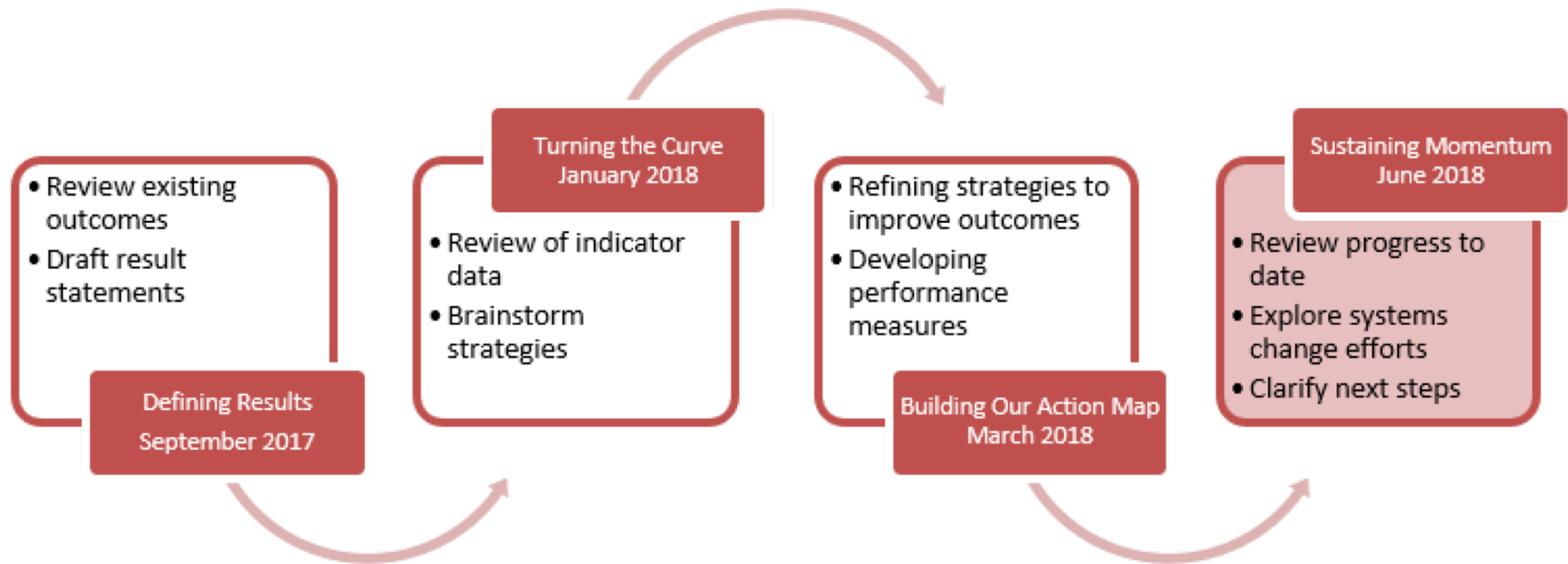


ACTION TEAM WORK TIME

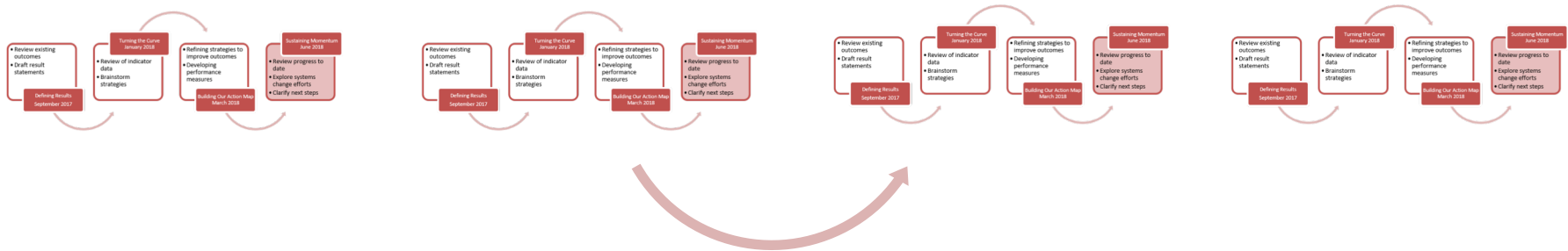
- What are your next steps? (Think 30-60-90 day timeline)
- How will you measure progress over time? What are your performance measures?
- When will you meet next and communicate?



LEARNING COMMUNITY PROCESS



LEARNING COMMUNITY PROCESS



NEXT STEPS

- Ongoing evaluation by Bell Policy Center
- Join Civic Network by creating a profile and joining the SWFI Network (www.civicnetwork.io)
- Meet with your Action Team between now and September to move the work forward
- Come to the September 10th Learning Community Meeting to report on progress and take next steps