

# Fuel Treatment Effectiveness on the 2011 Wallow Fire

Webinar Presentation October 19, 2011



# Presentation by:

Jim Pitts

Apache Zone Silviculturist (Former)

Input Provided by:

- Rusty Bigelow, Springerville Ranger District Fuels AFMO
- Rob Lever, Springerville Ranger District FMO
- Jim Aylor, Alpine Ranger District FMO
- Jim Schroeder, Alpine Ranger District Fuels AFMO
- Ray Rugg, Apache Zone Timber Management Officer
- Jim Pitts, Apache Zone Silviculturist
- Shilow Norton, Division Supervisor (T), Southwest Area Type 1 Team
- Linda Wadleigh, Regional Fire Ecologist and
- Tessa Nicolet, Regional Fire Ecologist
- Pam Bostwick, Regional Fuels Specialist





# Documenting Fuel Treatment Effectiveness



Photo: Jayson Coil

# FY 2012 USFS Program Direction

- FS Policy
- National Fire Plan
- Wildland fire and fuels management guidance
- FS has completed over 24 million acres
- Wildfires have burned into fuel treatments
- Effects on fire behavior, fire severity, and fire suppression
- Value of information:
  - 1) Validation
  - 2) Baseline data
  - 3) Adjust treatment prescriptions
  - 4) Share success



# Wallow Fire Fuel Treatment Effectiveness Reporting

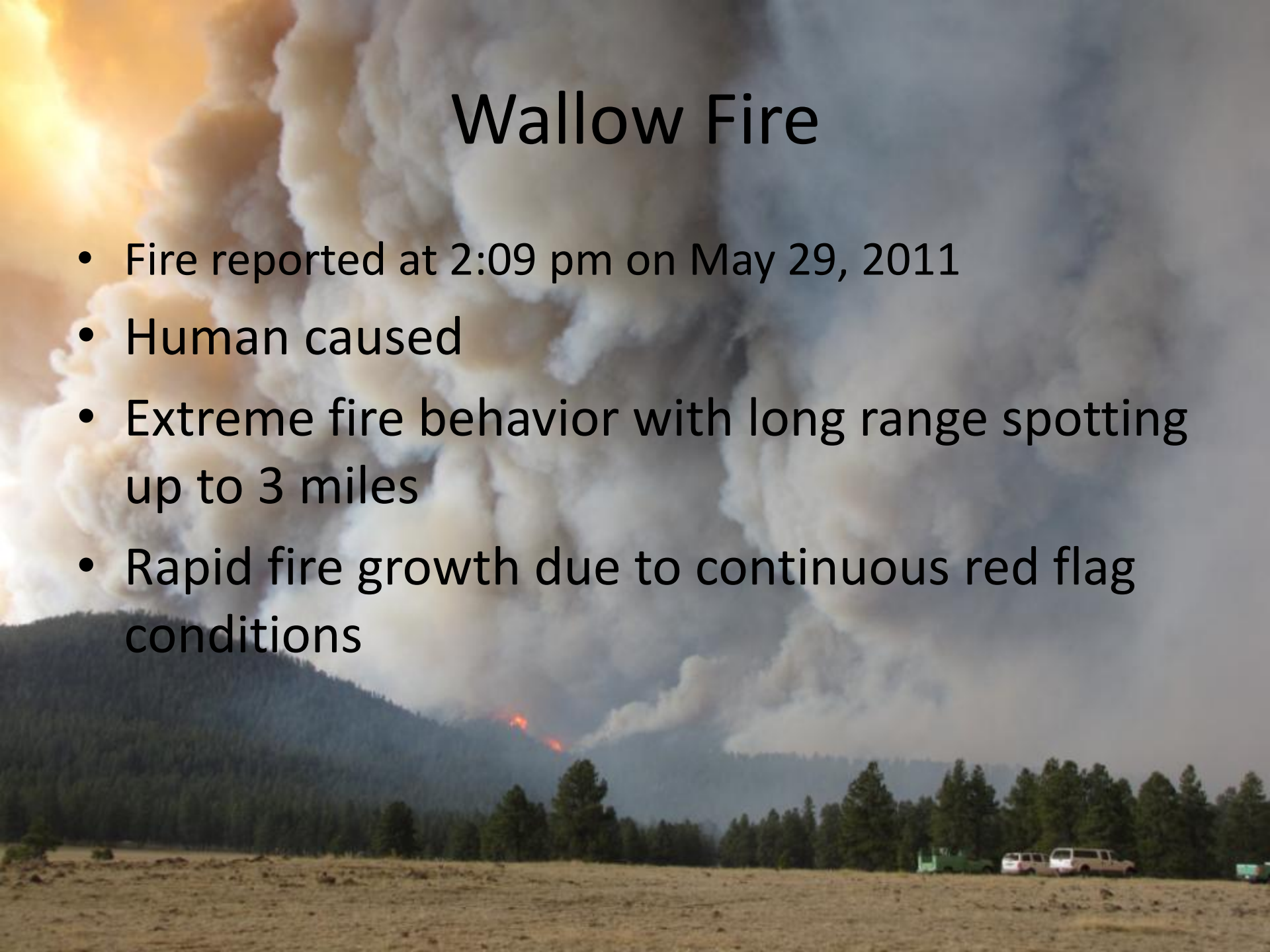


- **Reports Completed by – District, Forest and Regional specialists**



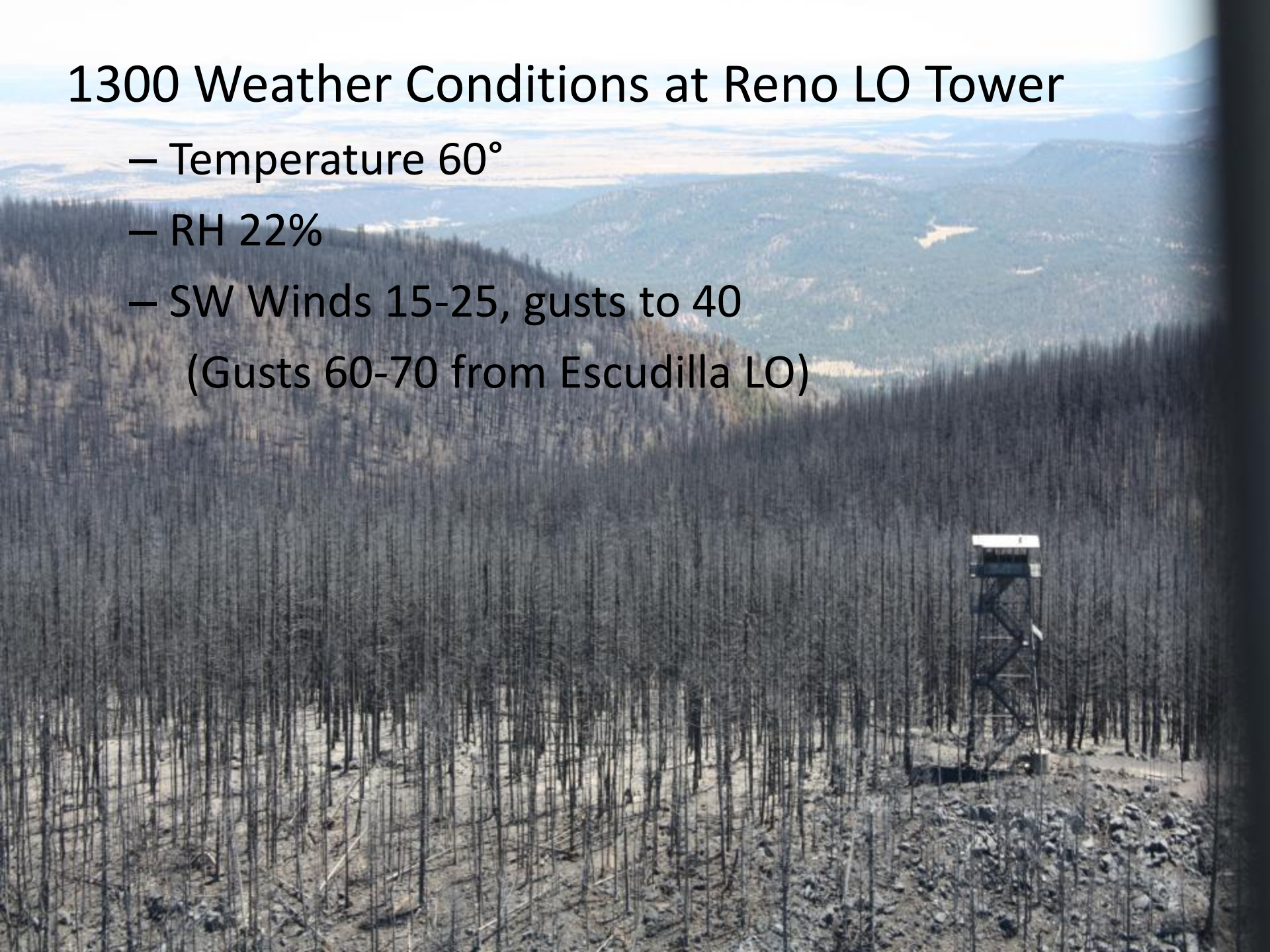
# Wallow Fire

- Fire reported at 2:09 pm on May 29, 2011
- Human caused
- Extreme fire behavior with long range spotting up to 3 miles
- Rapid fire growth due to continuous red flag conditions



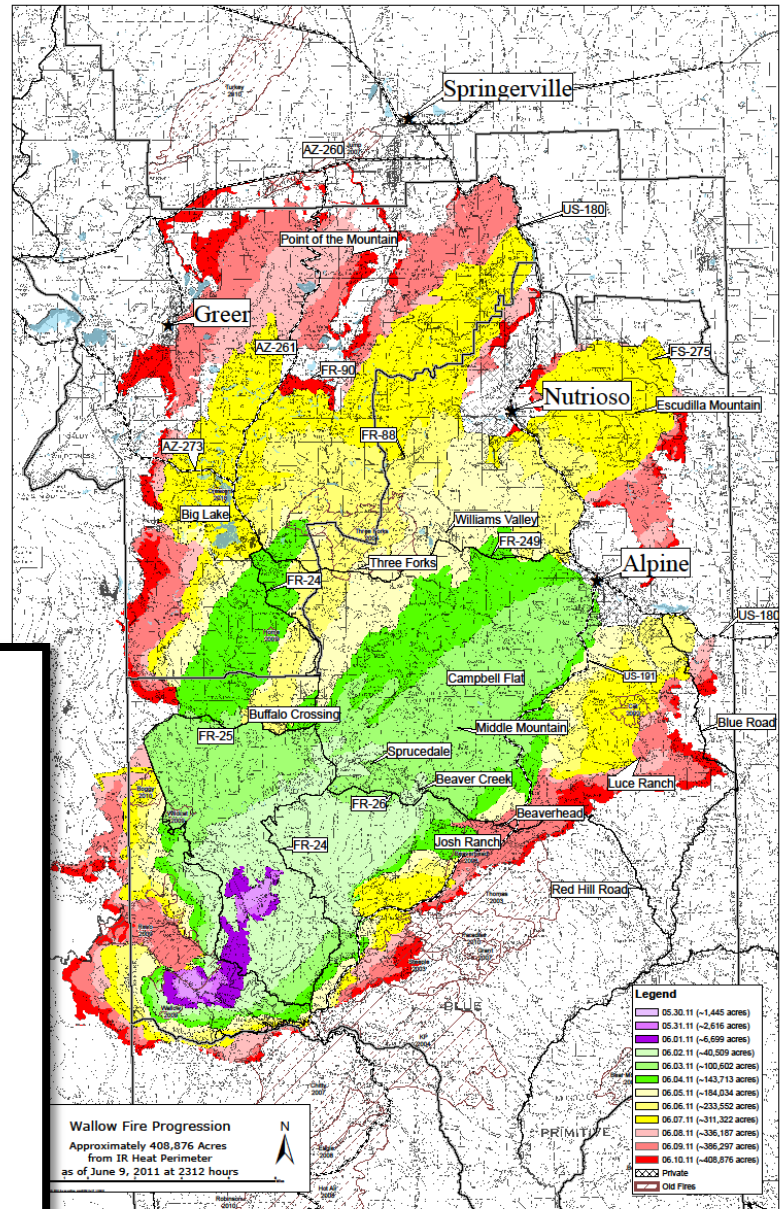
# 1300 Weather Conditions at Reno LO Tower

- Temperature 60°
- RH 22%
- SW Winds 15-25, gusts to 40  
(Gusts 60-70 from Escudilla LO)





Wallow Fire June 7, 2011





# Long Range Spotting



# Fuel Treatments



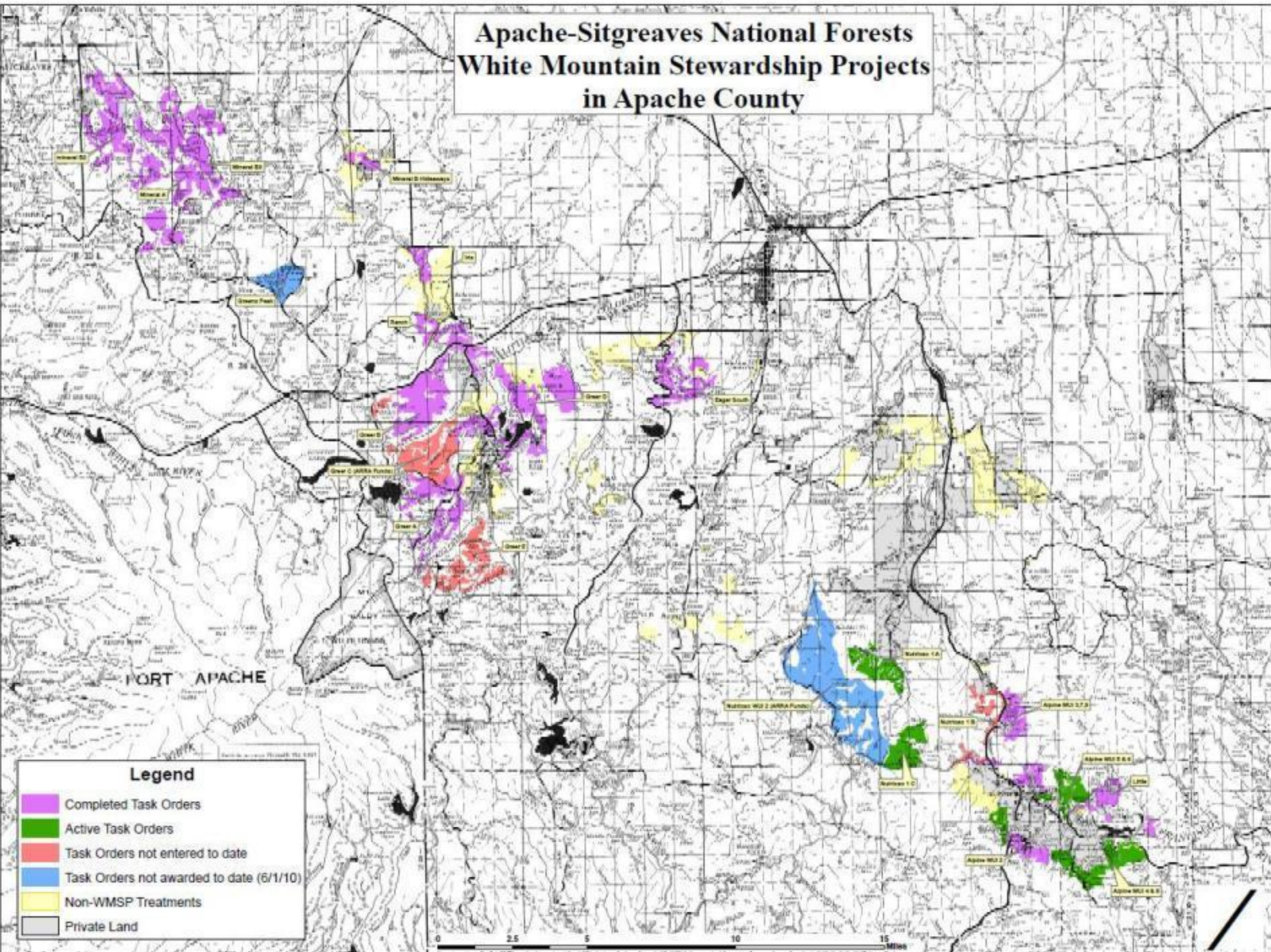


# White Mountain Stewardship





# Apache-Sitgreaves National Forests White Mountain Stewardship Projects in Apache County



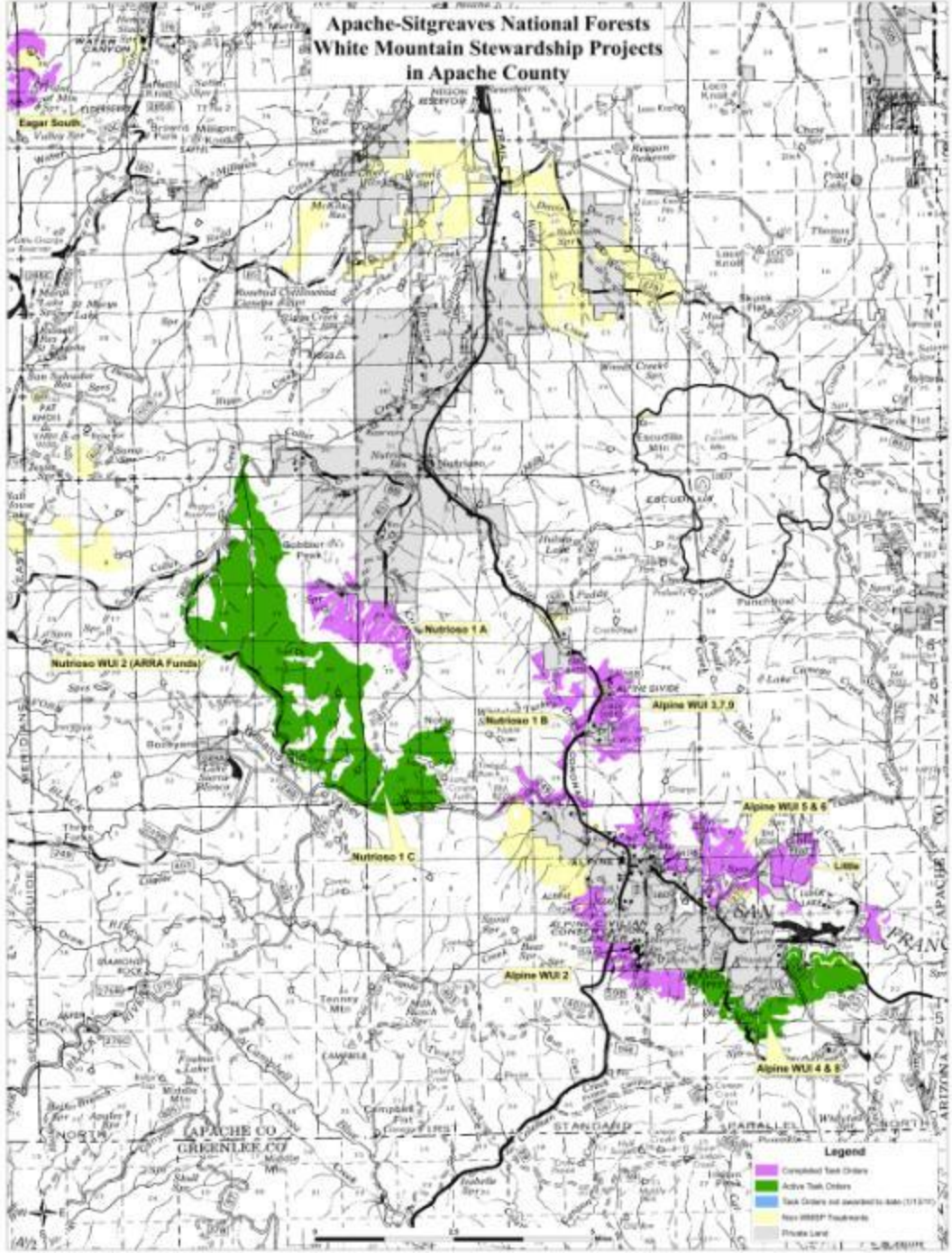
### Legend

- Completed Task Orders
- Active Task Orders
- Task Orders not entered to date
- Task Orders not awarded to date (6/1/10)
- Non-WMSP Treatments
- Private Land

0 2.5 5 10 15 Miles



# Apache-Sitgreaves National Forests White Mountain Stewardship Projects in Apache County

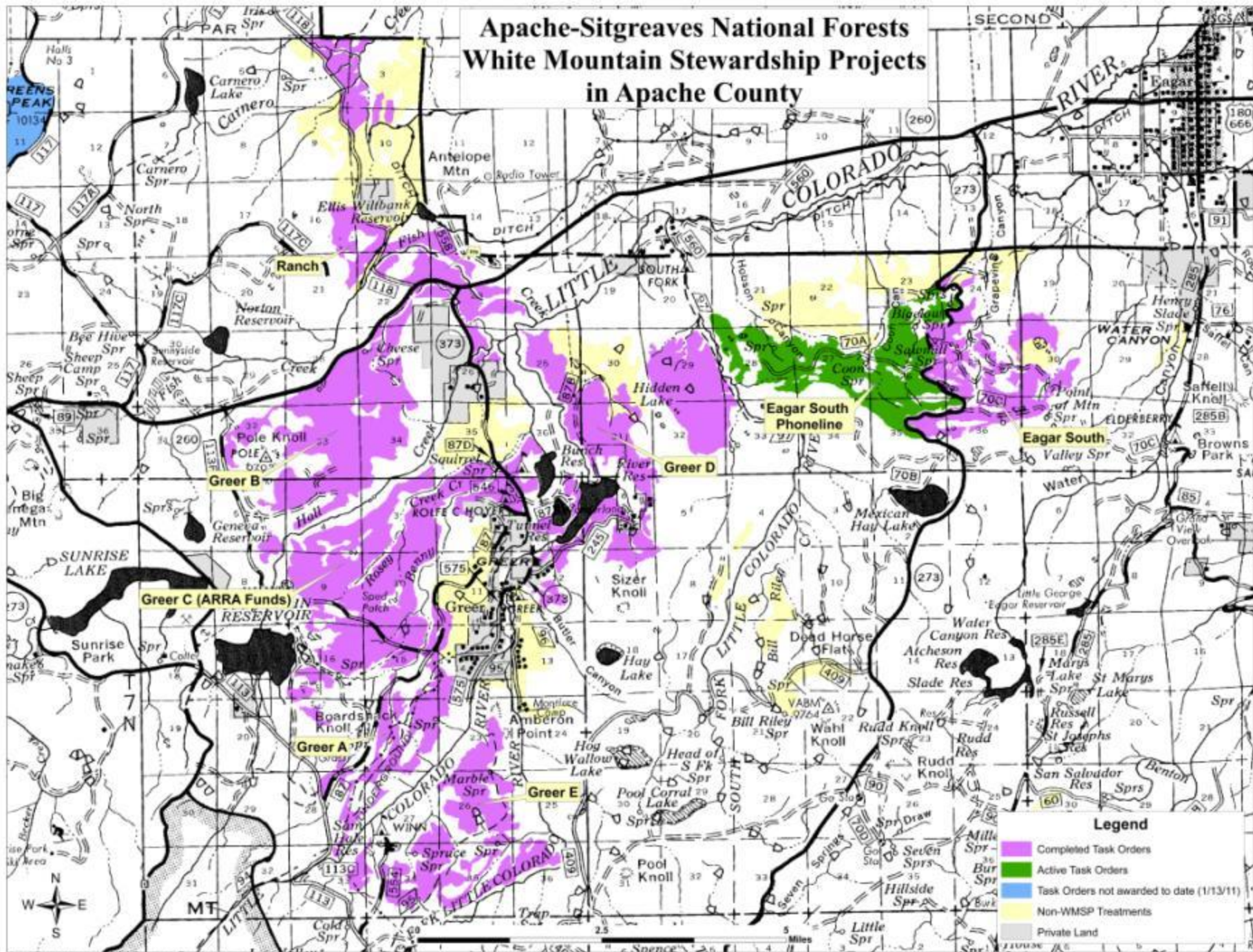


**Legend**

- Consistent Task Orders
- Active Task Orders
- Task Orders not awarded to date (1/1/17)
- New 2015+ Treatments
- Private Land



# Apache-Sitgreaves National Forests White Mountain Stewardship Projects in Apache County



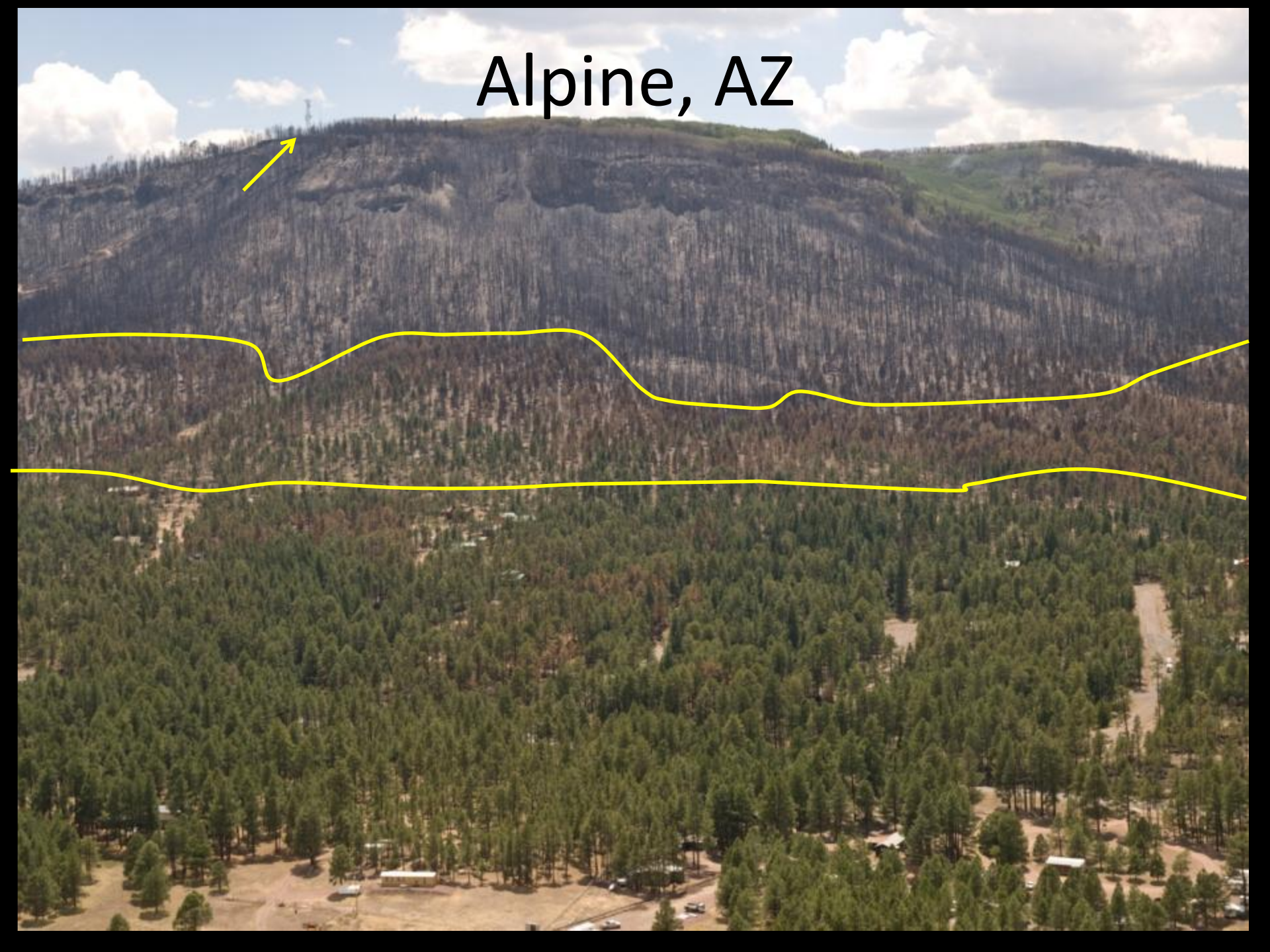


# Alpine, AZ





# Alpine, AZ





# Alpine, AZ





# Alpine home below fuel treatment

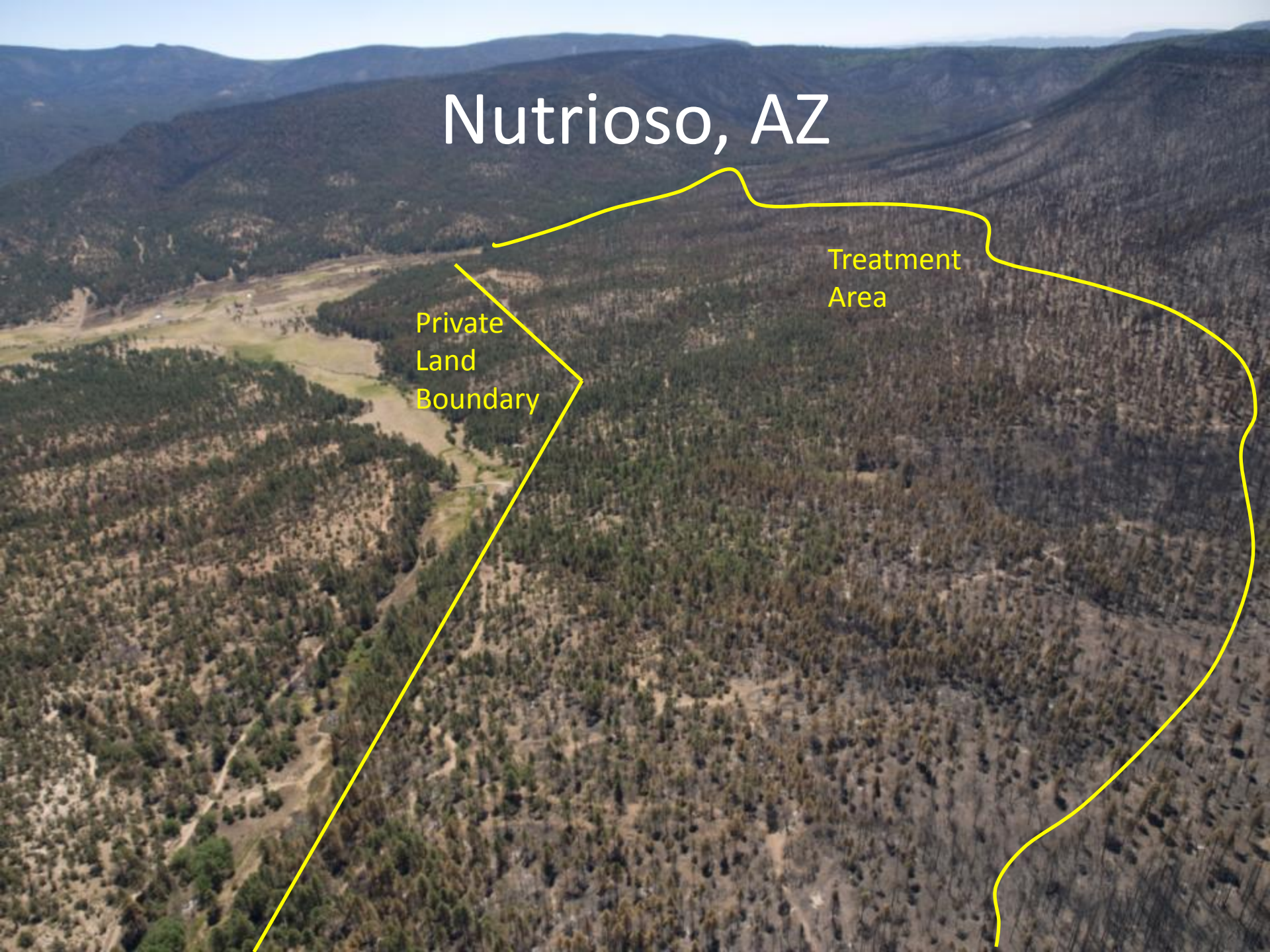




# Nutrioso, AZ

Private  
Land  
Boundary

Treatment  
Area





Greer, AZ





# Amberon Point

Photo: Jayson Coil





# Noon in Greer

Photo: Jayson Coil





# Amberon Point





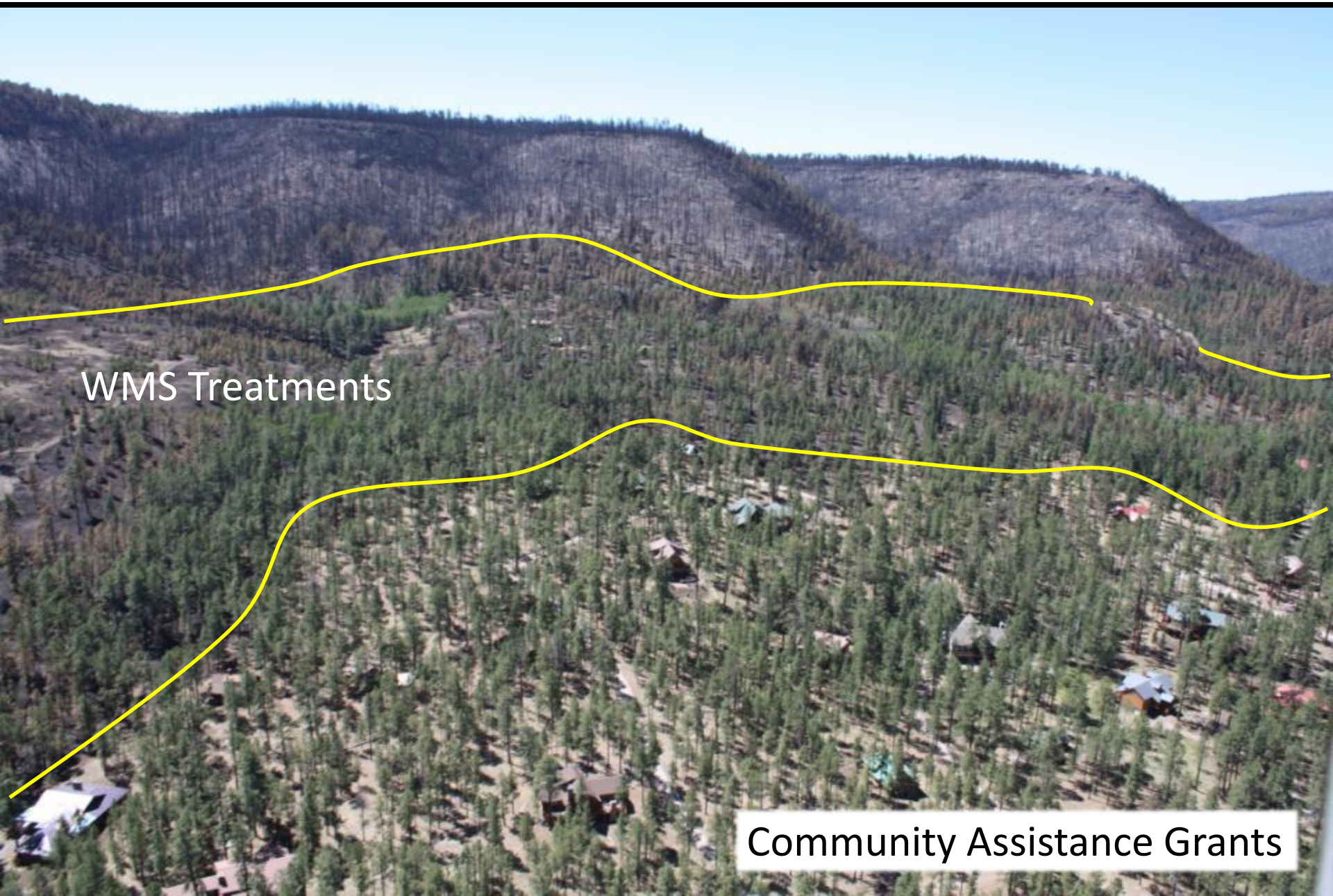
# Above Greer

Photo: Jayson Coil





# East side of Greer

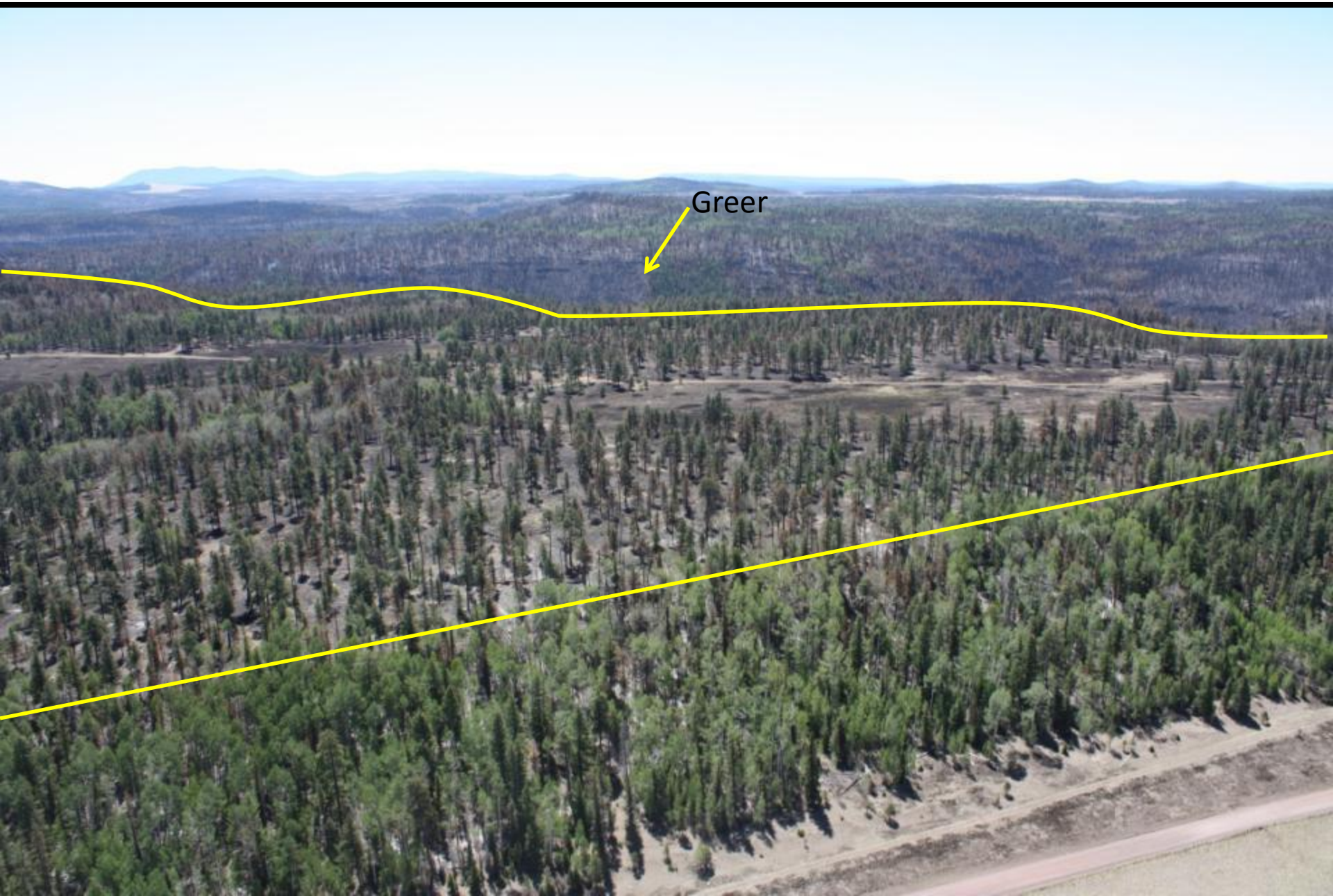


WMS Treatments

Community Assistance Grants



# West side of Greer



Greer



SW of Greer





Fire in Greer within treatment area





# Eagar/Springerville





# Eagar South WMS Pre/Post/Wallow





# Eagar South WMS Pre/Post/Wallow





Firefighter efforts...



It must be a combined effort.



# Summary

- Fire fighter efforts coupled with fuel treatments can save homes.
- Fuel treatments alone will not save homes.
- Treatments have evolved over the last 8 years to promote longevity.
- Treatments can be designed to meet multiple land management objectives.
- Homeowners who implemented “Firewise” principles aided in protection of homes.





Questions?  
Comments